



# International RS Tera Class Association World Championships 2014

27 July - 1 August 2014

## NOTICE OF RACE

amended 5 March 2014

### ORGANISING AUTHORITY

RSA RS Tera Class Association (with assistance from Knysna Yacht Club)

#### 1. RULES

- 1.1 The regatta will be governed by the rules as defined in The Racing Rules of Sailing 2013 - 2016
- 1.2 No national authority prescriptions will apply.
- 1.3 In addition to the safety regulations in the class rules, the sailing instructions will include a tally system which must be complied with. All sailors must have a whistle attached to their buoyancy aids. All boats shall carry a painter of at least 8m in length permanently attached to the standard fitment position in front of the mast.
- 1.4 Other than the matters included in this notice of race, no racing rule changes requiring advance preparation will apply. Racing rule changes will appear in full in the sailing instructions.
- 1.5 If there is a conflict between languages the English text will take precedence.

#### 2. ADVERTISING

- 2.1 Advertising is permitted in accordance with the class rules and ISAF Regulation 20.

- 2.2 Boats will be required to display advertising chosen and/or supplied by the RSA RS Tera Class Association.
- 2.3 The following parts of the hulls and sails must be left clear for the possible display of supplied advertising:
  - i) the front 1m of the bow - port and starboard sides
  - ii) the front 20cm of the boom nearest the mast - port and starboard sides
- 2.4 Competitors may be required to wear supplied advertising vests over their sailing gear to be clearly visible.

### **3. ELIGIBILITY AND ENTRY**

- 3.1 The regatta is open to all boats of the RS Tera class.
- 3.2 All competitors must be a member of the International RS Tera Class Association (IRSTCA) and hold a valid 2014 IRSTCA Membership Card. This will be supplied by the IRSTCA at registration on receipt of payment of the required membership fee.

Where their National Class Association is affiliated to the IRSTCA sailors must be paid-up members of their National Class Association. All competitors must be paid up members of their National Class Association and can then join the IRSTCA for R120, or where no such National Class Association exists they must join the IRSTCA for a fee of R250.

All RSA competitors must be paid up members of RSA RS Tera Class Association, fees for the year May 2014-April 2015 of R200 must be paid up prior to registration for the World Champs. All RSA competitors must be paid up members of an RSA Yacht Club and SAS - valid membership cards to be produced.

International competitors must be members of their National Sailing Authority and Yacht Club and must provide membership cards or similar proof at registration.

IRSTCA membership applications will be available at registration or may be completed in advance on the registration web site.

Evidence of membership will be required at registration, IRSTCA and local Class Membership where applicable.

- 3.3 Eligible boats may enter by:
  - (a) completing the on line entry form at **[www.rstera.co.za](http://www.rstera.co.za)**
  - (b) **completing the entry form and emailing or faxing it to the Regatta Secretary**
  - (c) making the required entry fee payment and attaching the sailors name and sail number as clear reference of entry
  - (d) at registration supplying a completed Medical Information declaration (for all competitors) and a completed Parent's / Guardian consent form signed by the responsible parent or guardian. Forms will be available at registration or for download at [www.rstera.co.za](http://www.rstera.co.za)
  - (e) all competitors must hold third-party insurance valid in the Republic of South Africa to cover any liability arising during the event. Competitors will be required to sign at registration that this cover is in place. International competitors making use of the official supplied charter boats do not require such cover as it will form part of their charter agreement.

- 3.4 For all competitors / nationalities the following age and gender rules apply:

**RS Tera Pro aged 18 or under on 27th July 2014 - no gender restriction.**  
**RS Tera Sport aged 15 or under on 27th July 2014 - no gender restriction.**

3.5 Entry Fee (excludes charter boat fees where applicable) (discounted for early payment as follows):

- R3500 if entry and full payment received before 31st March 2014.
- R4000 if entry and full payment received before 1st June 2014.
- R4500 if entry and full payment received **after 1st June 2014 but before 1st July.**
- R4850 for all entries and full payment received **after the 1st July 2014.**

Non-refundable payments can be made by instalment . Full payment to be made prior to the date of the discounted entry fee to qualify for the discount. Total due will be the total installment as calculated based on the date of the final payment received.

**A sibling discount for families with two or more sailors entering the event is available. For a second and subsequent sailor, the discount is R500 for that entry and subsequent entry only. Sibling discounts where due will be calculated in the entry fee.**

**Entries received after the 1st June 2014 will go onto a waiting list.**

(a) *All promotions from waiting list to confirmed entries will depend on payment of entry fees and on available space at the sole discretion of the organising authority.*

3.6 **Included in Entry Fee (see NOR addendum 1 for inclusions)**

3.7 **Charter boats**

Charter boats are reserved for international competitors and may be limited by nationality to ensure equal opportunity for all participating nations.

Early entry is essential to ensure sufficient numbers of charter boats are reserved per nation in both fleets.

Payment of 220 GBP for charter boats must be made to the International RS Tera Class Association for international entrants. Details for payment will form part of the online entry.

#### 4. **SCHEDULE**

Thursday 24th July - 27th July	Charter boats available from this date,	
Saturday 26th July	09:00hrs to 17:00hrs	Registration & Equipment inspection
Sunday 27th July	09:00hrs to 13:00hrs	Registration & Equipment inspection
	09:30hrs	Race committee and rescue

	10:00hrs	briefing
	11:00hrs	Coaches / support boat Briefing
	14:00hrs	Competitors Briefing
		Tune up race
Monday 28th July	09:55hrs	Racing First Warning Signal
Tuesday 29th July	09:00hrs	Racing First Warning Signal
Wednesday 30th July	09:00hrs	Racing First Warning Signal
Thursday 31st July	09:00hrs	Racing First Warning Signal
Friday 1st August	09:00hrs	Racing First Warning Signal
No warning signal after 16:00 on Friday 1st August 2014.		

Closing ceremony and prize giving function after racing as soon as results are finalised.

The Championship will consist of no more than 15 races. The intention is that there will be no more than 4 races a day. However, additional races may be sailed either in advance or arrears in order to complete the programme if weather or other reasons dictate at the discretion of the Race Committee.

The final day of racing will be Friday 1st August 2014 and any number of races may be sailed. No warning signal will be made after 16:00hrs on Friday 1st August 2014.

It is likely that all races during a day will be sailed without time to go ashore in between races, however, it is at the Race Committee's discretion to allow sailors to go ashore for lunch breaks when conditions allow - racing will take preference at all times.

## 5. MEASUREMENTS

Each boat shall be measured and inspected prior to being allowed to complete registration and compete. In addition spot measurements may be taken at any stage during the regatta. Items which are in conflict with the Class Rules will not be permitted and any masts repaired that are no longer compliant with class rules will not be permitted to be utilized.

## 6 SAILING INSTRUCTIONS

The sailing instructions will be available at registration and will be posted on the event notice board at the commencement of registration procedures.

## 7 VENUE and RACE AREAS

The venue for the IRSTCA 2014 World Championships will be Pine Lake Marina Water Front Resort, Sedgfield, South Africa. Attachment A shows the location of the race areas which will be selected on the main water body of the Swartvlei Lake to the west of the resort.

## **8 THE COURSES**

Courses will be Trapezoid with inner and outer loops and gates depending on the fleet (pro or sport sail).

## **9 INTERNATIONAL JURY**

An International Jury (IJ) will be appointed in accordance with RRS 91(b). Its decisions will be final as provided in rule 70.5. The IJ may elect to hold an arbitration hearing prior to going to a full jury hearing.

## **10 PENALTY SYSTEM**

RRS Appendix P will apply except that every penalty is a Two-Turns Penalty. RRS P2 will be changed in as far as Rule P2.3 will not apply and rule P2.2 is changed so that it will apply to any penalty after the first one.

## **11 SCORING**

The Low Point System of Appendix A will apply.

### **11.1 RACES REQUIRED TO CONSTITUTE A SERIES**

4 races shall be completed to constitute a series.

### **11.2 RACES TO COUNT FOR TOTAL SCORE**

The total score for each yacht will be the sum of her scores as follows:

- (a) When between 5 and 8 races are completed then all race scores will count except her worst score.
- (b) When 9 or more races are completed then all race scores will count except her worst 2 scores.

### **11.3 CALCULATION OF SCORES**

- (a) Points for the Pro and Sport fleets shall be calculated separately.
- (b) Points for the Girls prizes in the Pro and Sport fleets shall be calculated separately.

## **12 SUPPORT BOATS**

- (a) All support boats will be marked with a flag and or sticker as supplied at registration.
- (b) All support boats will fly their national flag from leaving their designated berth to their return.
- (c) All support boats will follow the registration procedure and conduct as provided at registration.

## **13 BOATS AND TRAILER STORAGE**

- a) Boats to be stored on their dolly in the designated area near the water.
- b) Road trailers to be stored in the designated parking area at the entrance to the resort.

## **14 RADIO COMMUNICATION**

Except in an emergency, a boat shall neither make radio transmissions while racing nor receive radio communications not available to all boats.

Competitors may be required to carry an electronic transmission device including a GPS for the purposes of tracking. Only devices provided by or instructed for use by the event organisers may be used and taken onto the water. All other electronic devices, including mobile telephones, tracking devices and music players are not permitted onto the water.

Gro-pro cameras or the like may be provided by the organisers for use on the water. No personal such devices are permitted on the water according to class rules.

## **15 PRIZES**

(a) RS Tera Pro as a minimum dependent on number of entries  
1st - 6th Overall (World championship Gold, Silver and Bronze medals)  
1st – 3rd Ladies

(b) RS Tera Sport as a minimum dependent on number of entries  
1st - 6th Overall (World Championship Gold, Silver and Bronze medals)  
1st - 3rd Ladies

(c) Titles will be awarded as follows:

RS Tera Pro World Champion:	1st RS Tera Pro Overall floating trophy
RS Tera Sport World Champion:	1st RS Tera Sport Overall floating trophy

(d) Individual Nations, or groupings of Nations, may elect to award certificates to the top 3 sailors from their nation in each fleet at prize giving.

## **16 DISCLAIMER OF LIABILITY**

Competitors are entirely responsible for their own safety, whether afloat or ashore, and nothing reduces this responsibility. It is for competitors to decide whether their boat and its helm and crew are fit to sail in the conditions that they might find. By launching competitors confirm their boat is fit for those conditions and that they are competent to sail and compete in them. Nothing done by the organizers can reduce the responsibility of the owners and/or competitors, nor will it make the organizers responsible for any loss, damage, death or personal injury, however it may have occurred, as a result of the boat taking part in the racing. The organizers encompass everyone helping to run the event and include the organizing authority, race committee, race officer, safety officer, patrol boat personnel and beach masters. The provision of rescue boats does not relieve owners and competitors of their responsibilities.

## **17 RIGHT & COPYRIGHT**

In participating in the RS Tera World Championship any competitor automatically grants to the Organising Authority, the National and International Class Associations permission to make, use and show, from time to time, any motion pictures and live, taped or film television and other reproductions of him/her during the period of the event without compensation.

## **18 FURTHER INFORMATION**

For further information please contact:

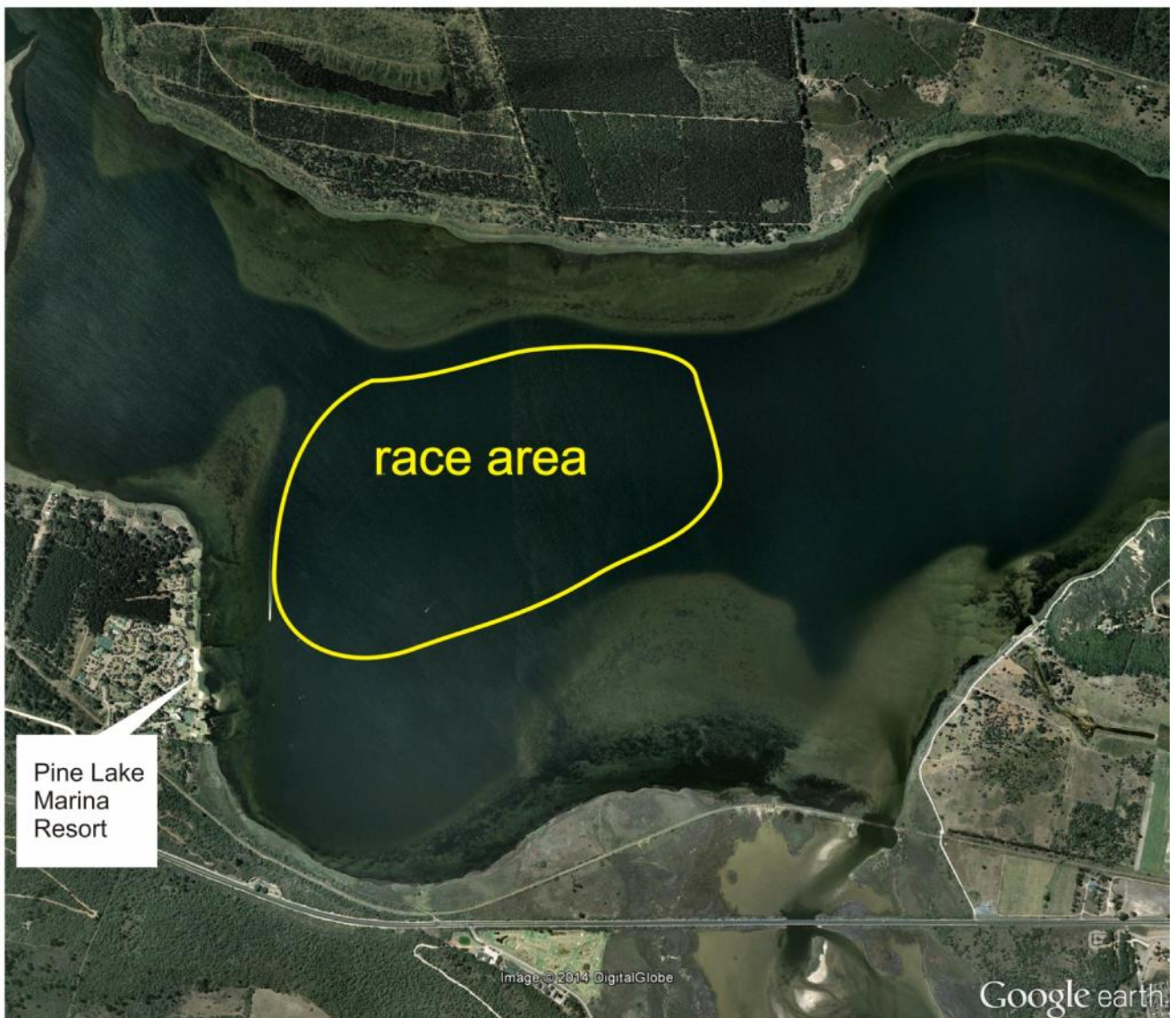
Event Directors –

IRSTCA Vice President and RSA RSTCA Class Secretary – Cathy Avierinos – +27 82 5586589

IRSTCA President - Frans Boer - [chairman@irstca.com](mailto:chairman@irstca.com) -

Information relating to accommodation at the venue, discounted rates, extended stays, tourism information for the area in general etc will be posted to the event website,

## Attachment A - Race Area



### Addendum 1

Included in entry

NOR IRSTCA World Championship 2014 - Pine Lake Marina, South Africa 27 July - 1 August 2014



All sailors will receive:

- An entry pack containing their country flag for placing on the sails, event shirt, event rash vest and voucher pack for discounts on local activities etc;
- a meal after each day of racing;
- a bottle of water for the racing.